

The Sixth Form



The Prospect School Sixth Form provides a rewarding and challenging post-16 curriculum, with a broad range of academic and vocational qualifications to suit a range of individual needs and interests.

The student population consists of a large proportion of the school's former Year 11 students alongside students from a variety of other local schools. The Sixth Form provides a dynamic, diverse and lively learning environment.

In recent years, our A Level results have attained the highest average point score of all non-selective schools in Reading, representing a remarkable achievement for our students and staff. The latest Ofsted report said: *'Teaching in the sixth form shows many strengths. Teachers' secure subject knowledge, high expectations and skilful questioning are extending students' learning well. Teachers' strong subject expertise helps to interest students and promote engagement'*. (Ofsted May 2019).

All students are given challenging learning goals and progress is tracked throughout their courses to ensure they maximise their potential. A large number of our students attend University; others follow further and higher apprenticeships.

In addition to the academic curriculum, our enhanced curriculum includes opportunities for students to add to their skills portfolio through a range of activities including Core Maths, the Extended Project; LORIC and service to school. Students are able to extend their ability to lead, organise, demonstrate resilience show initiative and communicate in a range of contexts. Our aim is to equip students with the qualifications and skills they may need, no matter what their next steps are.

Reasons to join Pros6

- High quality, engaging teaching in small groups.
- An extensive range of courses, including A Levels, BTECs, OCR Nationals and the Extended Project Qualification.
- Effective and knowledgeable support from our dedicated Sixth Form team.
- Friendly and positive atmosphere.
- Regular progress reviews with members of staff.
- Opportunities for extra-curricular and enrichment activities.
- Well-stocked Learning Resource Centre.
- Easy access to ICT facilities and resources to support learning.
- Dedicated supervised study space, refectory and small group study areas.

ASPIRE • BELIEVE • ACHIEVE

Apply to the Sixth Form



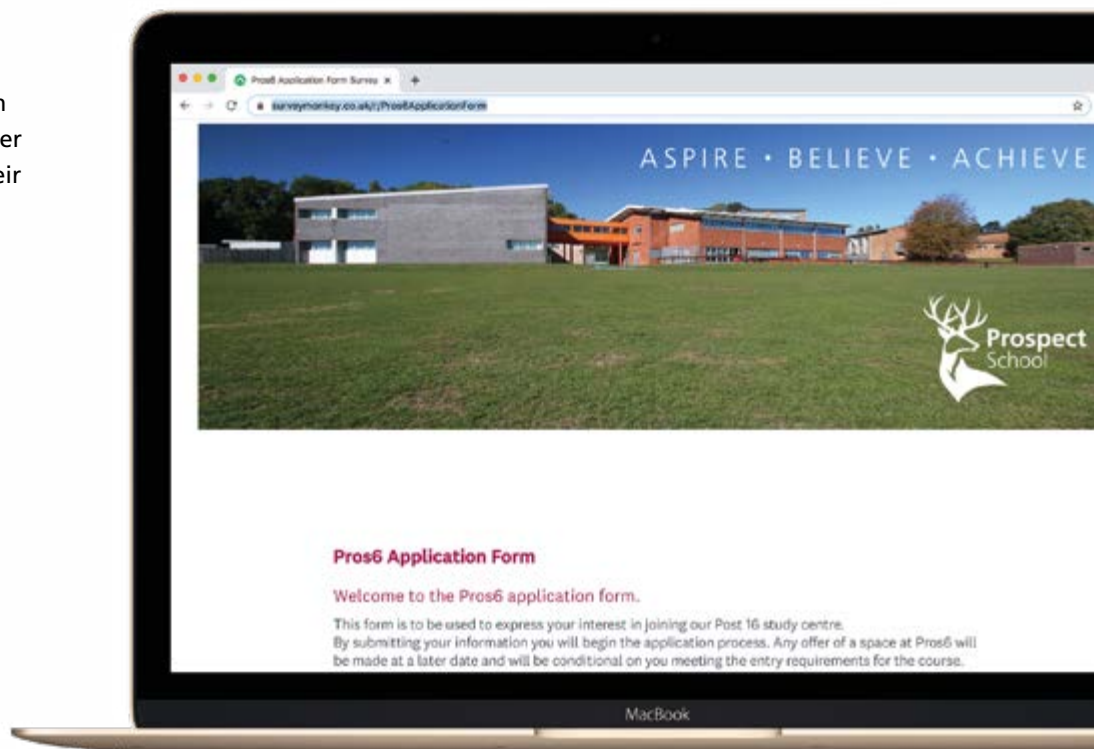
The next step

Applications are accepted from January 2021. We would ask for all applications to be submitted before the end of February so invites to interview can be sent out.

Please apply to the Sixth Form [here](#)

Applications will only be accepted through our online form.

All students who apply to Sixth Form will be invited to meet with a member of the Sixth Form team to discuss their choices. All offers of places will be subject to satisfactory GCSE grades and the availability of courses.



ASPIRE • BELIEVE • ACHIEVE

Our Mission

Our mission is to equip students with the knowledge, skills and qualifications they need for the future. Our aim is to ensure that our pupils succeed academically and that they also become responsible, informed citizens who can make positive contributions to British society. We strive to ensure that all pupils aspire to reach their full potential and set themselves ambitious goals for the future.



Key expectations of Sixth Form students

1. To be an excellent role model to younger students, and always represent the school positively in the local community and elsewhere.
2. To dress in an appropriate way for the school learning environment, so that you do not cause offence through slogans or inappropriate attire.
3. To be punctual for all lessons, study sessions, registrations, assemblies and enhanced curriculum lessons.
4. Attendance to be above 95%. Absence will be authorised to attend interviews, open days, etc by prior notice only.
5. Not to undertake more than ten hours' paid employment per week during term time. Never to do paid work during school hours.
6. To arrive at lessons on time with the required equipment and materials, such as a folder of well-organised notes.
7. To hand in all homework, coursework and/or assignments on or before the deadline set by the teacher; to discuss any problems with teachers before they become serious.
8. To ensure that you are well organised, take responsibility for your conduct and work and ask for help if necessary.
9. All students to be onsite by 08:25. Access to site is restricted and if students arrive after this time they may not gain entrance.
10. For all students to participate fully in the Enhanced curriculum offer.

ASPIRE • BELIEVE • ACHIEVE

Key information



Timetable

Year 12 Students have a minimum of 40 registered periods a fortnight. Year 13 students have a minimum of 35 periods.

Registration

All students must register every morning with their tutor.

Enhanced Curriculum

Take place throughout Year 12 and Year 13. It may include Reading Scholars, Coach Bright, UCAS Workshops, University updates, Apprenticeship sessions..

Extended Project

An additional qualification that allows students to research, log and manage a project that they have created for themselves. The qualification is worth half an A level. It is completed during tutor sessions.

Core Maths

An additional qualification that supplements courses that require a slightly higher level of maths than at GCSE.

LORIC

A programme designed to ensure students demonstrate skills of leadership, organisation, resilience, initiative and communication.

Year 12 students are allocated a further five periods a fortnight to complete these programmes independently.

Year 13 students follow a post-Sixth Form pathway that includes advice and guidance on university applications, information about apprenticeships and CV building.

Supervised Study

All students are allocated supervised study periods (dependent on timetable). These take place in one of dedicated study spaces and are monitored by the Sixth Form study mentor. Students may be allocated additional supervised study if their subject teacher feels they need additional support. This takes place in F7, where silent study is supervised by a study mentor.

Monitoring

All year 12 students are assessed in terms 2, 4 and 6. In addition they have PPEs (pre-public exams) in June.

Year 13 students are assessed in term 1, 2 and 4 and have PPEs on at least 2 occasions.

Prospect School Sixth Form Bursaries

You may be eligible to apply for a bursary to help you with the requirements of your studies; this includes money towards travel, resources and clothing.

The bursary is **MEANS TESTED** and students **MUST APPLY** for them. This fund will be aimed at students whose families have a low annual income of below £22,000.



Accountancy



Course Outline

The qualification looks at both aspects of financial and management accounting. Students will study:

- 1 Role of an accountant in business
- 2 Types of business organisation
- 3 Double entry model
- 4 Verification of accounting records
- 5 Accounting concepts used in the preparation of accounting records
- 6 Preparation of financial statements of sole traders
- 7 Limited company accounts
- 8 Analysis and evaluation of financial information
- 9 Budgeting
- 10 Marginal costing
- 11 Standard costing and variance analysis
- 12 Absorption and activity-based costing
- 13 Capital investment appraisal
- 14 Accounting for organisations with incomplete records
- 15 Partnership accounts

- 16 Accounting for limited companies
- 17 Interpretation, analysis and communication of accounting information
- 18 The impact of ethical considerations

Students will sit two 3-hour papers at the end of the qualification, both worth 50%.

Exam Board

AQA.

Skills Required

Students should have a critical mind, be a problem solver and be able to write in a coherent and logical way. An ability to work independently and a self-motivator is also important.

Entry Requirement

- GCSE English and Maths at grade 6 or above.



Future opportunities

Studying Accounting will provide a student with one of the most sought after skills in any business. An understanding of the financial health is of utmost importance to any business and all businesses employ the services of accountants to look after their financial affairs. Accounting knowledge can be very useful for you if you decide to be an entrepreneur in future, become a thriving finance professional or just lend a hand in the running of your family business.

A level Accounting is relevant for students who want to pursue a degree in Accounting or Business Studies at university. Almost all such degrees may have several Accounting modules in their programmes.

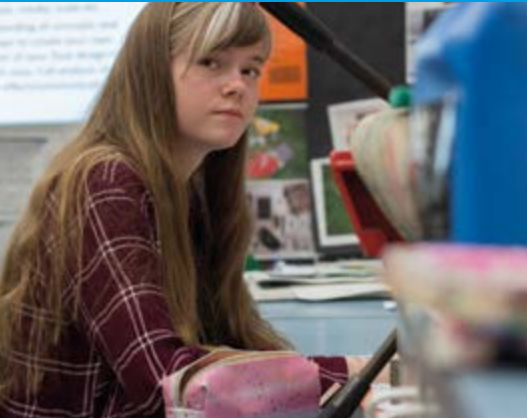
A level Accounting is also a must for students who wish to pursue a professional qualification in accountancy from one of the six major accountancy bodies in the UK. As a profession, accountancy ranks amongst the highest in the UK, with the Big Four accountancy firms featuring consistently in the top 10 of the Times Top 100 Graduate Employers rankings

A finance background can also be of use if you aspire to work in a managerial role for any organisation in the future. About 49% of the CEOs of FTSE 100 companies came from a financial background either holding an accountancy qualification or having held a previous finance role.



Art and Design

Art and Design Photography



Course Outline

The course is designed around theme based projects that are chosen and independently explored by our pupils. Students receive their own space in the A Level studio and receive a combination of teaching in group activities or personal 121 mentoring sessions.

The final grade is composed of 60% course work and 40% exam. The Art and Design and Photography courses meet the assessment objectives by evidencing analysis of contemporary and/or traditional art, development and experimentation with independent ideas and usually flow through to a large scale final outcome.

There is a written component in which pupils must debate a question and explain their art work linking with their contextual studies.

Exam Board

Edexcel.

Skills Required

Students must have a desire to think imaginatively, creatively and independently. Students should have a confident ability in drawing to study the Art and Design unendorsed course.

Entry Requirement

- Students must have gained a level 5 or above in GCSE Art/Art Photography and English for both courses.
- Students wishing to study the Photography endorsement must have access to a camera outside of school.
- Students must have a passion for Art and/or Design.



Future opportunities

Both endorsements can lead to a variety of future careers. Along with specialist careers in Fine Art, the A Level courses prepare you for a career in Fashion, Graphic Design, Architecture, Photography, Textiles, Interior Design, Teaching, and Computer Graphics.

Art A Level is recognised as an entry qualification for a wide variety of Art Foundation courses and Arts degrees at University.





Art and Design

(Fashion Graphics and 3D Design)
BTEC Level 3 Extended Certificate



Course Outline

This course covers a wide range of areas in the art and design sector. Mandatory Units that covers areas such as managing a design brief and working with a client, developing and realising creative ideas, professional practice in art and design and materials, techniques and processes. There is a design and make element which will require students to produce a portfolio.

This course offers the opportunity to study to specialist units in:

- Fashion Design and Production
- Graphics
- 3D Design and Crafts

Exam Board

Pearson Edexcel.

Skills Required

Successful students will have a passion for the subject and will have studied Design Technology at KS4. They must be dedicated and motivated with an excellent memory for the theories, processes and materials involved in Art and Design and creative mind to create innovative and unique solutions.

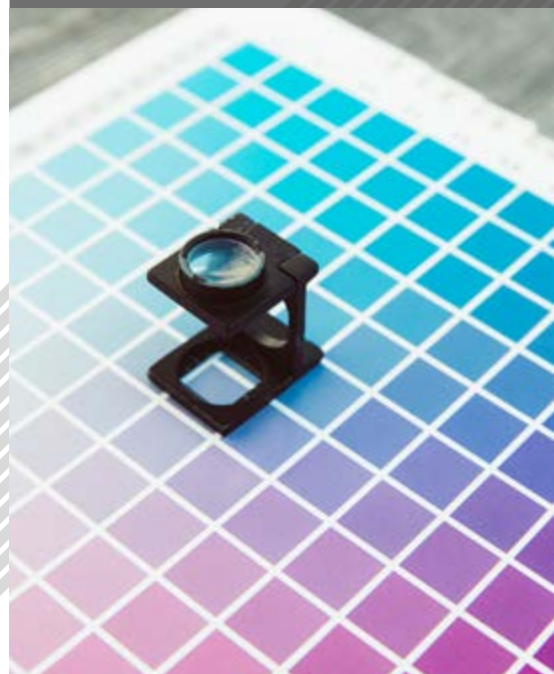
Entry Requirement

- GCSE Maths Grade 4 and above.
- GCSE English Grade 4 and above.
- GCSE Design Technology (any discipline) Grade 4 and above.



Future opportunities

Design is a very versatile subject that can lead on too many different paths. It is excellent for Further Education in creative subjects at University and College. Subjects such as architecture and engineering look for students with this qualification. It is also excellent preparation for Practical based apprenticeships in your chosen specialism





Beauty Therapy

VTCT Level 2 Diploma



Course Outline

If you're considering a career in the beauty industry, this is the start for you. The VTCT Level 2 Diploma in Beauty Therapy is a Technical Certificate qualification aimed at learners who wish to pursue a career as an employed and/or self-employed beauty therapist. On this one-year course you will learn: .

This course offers the opportunity to study to specialist units in:

- Health safety and hygiene
- Consultation techniques and client care
- Manicure treatments
- Pedicure treatments
- Waxing services
- Facial treatments
- Skin type analysis
- Eyebrow shaping services
- Eyelash and eyebrow tinting services
- Make-up applications
- Anatomy and physiology for beauty therapists

Throughout this course, you will develop the knowledge, understanding and skills to consult with clients whilst providing a range of beauty treatments. You will also develop your communication and customer service skills, awareness of environmental sustainability and commercial skills, all of which are valued highly by employers.

Skills Required

Successful students will have a passion for the subject and will have studied Design Technology at KS4. They must be dedicated and motivated with an excellent memory for the theories, processes and materials involved in Art and Design and creative mind to create innovative and unique solutions.

Entry Requirement

- GCSE Maths Grade 3 and above.
- GCSE English Grade 3 and above.
- Own beauty kit/uniform purchased at school.

A work placement is also a mandatory requirement.



Future opportunities

Learners who achieve this qualification are eligible to become members of the British Association of Beauty Therapy and Cosmetology (BABTAC) or Federation of Holistic Therapists (FHT). As a beauty therapist, learners could progress directly into employment in a variety of contexts, which include:

- Commercial salons
- Day spas
- Further education/level3





Biology



Course Outline

Biology is a linear qualification and so is examined at the end of year two. There are three exams that cover the following topics:

- Biological molecules
- Cells
- Exchange of substances with the environment
- Genetic information, variation and relationships between organisms
- Energy transfers in and between organisms
- Responses to change in internal and external environments
- Genetics, populations, evolution and ecosystems
- The control of gene expression

Exam Board

AQA.

Skills Required

Successful students will have a passion for the subject and an interest in all areas of Biology. Students must be self-motivated and willing to read around the subject outside of lessons (essential for the synoptic essay in the exams). They will possess excellent practical skills and are able to work in a logical, careful manner showing attention to detail. Students need an excellent memory as Biology requires detailed recall of numerous processes and biochemical pathways, as well as facts, figures and definitions. Confidence in maths is essential as mathematical skills are embedded throughout the course, including the use and interpretation of statistics. Literacy skills are highly important as the exams contain extended response questions as well as an essay.

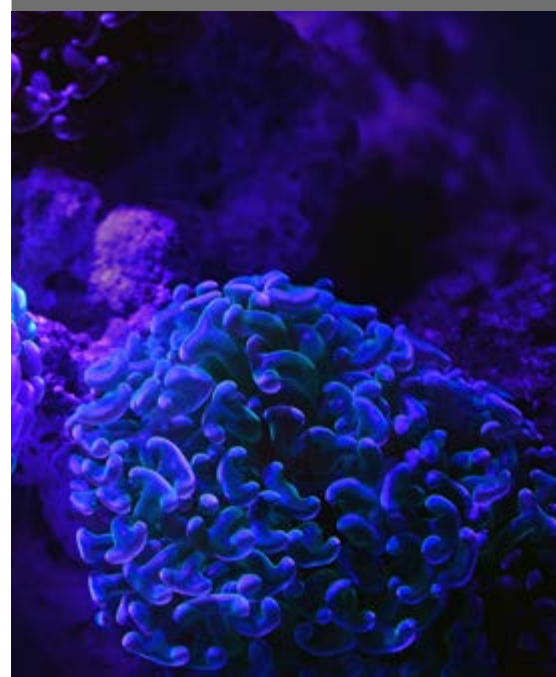
Entry Requirement

- GCSE Science at grade 6/6 or GCSE Biology at grade 6 or above.
- In addition to this, students are required to have GCSE Maths at grade 5 or above.



Future opportunities

Biology is the science of life. Studying this fascinating subject will give students a unique insight into the world around them and will provide a passport to a range of careers and opportunities for further study at University or College. The study of any science at A-Level will provide grounding in scientific method, logical thinking and problem solving – essential tools in the workplace. A-Level Biology is important for a whole range of careers in medicine, food service, biotechnology and health.





Business Studies



Course Outline

The course is structured into 4 themes and consists of 3 externally examined papers. Students are introduced to business in Themes 1 and 2 through building knowledge of core concepts and applying them to business contexts to develop a broad understanding of how businesses work. Themes 3 and 4 build on this requiring students to take a more strategic and global view of business.

Papers 1 and 2 make up 35% of the grade whereas Paper 3 is only 30%.

Exam Board

Edexcel.

Skills Required

Students should have a genuine desire and interest in Business. Students should have a critical mind and be able to write in a coherent and logical way. An ability to work independently and with others is also important.

Entry Requirement

The minimum requirement to take the A Level Business is to have at least 5 x Grade 5 @ GCSE, including 6 in English and Maths. Business at GCSE is desirable.

The good news is that no prior learning knowledge or experience is essential to take this course.



Future opportunities

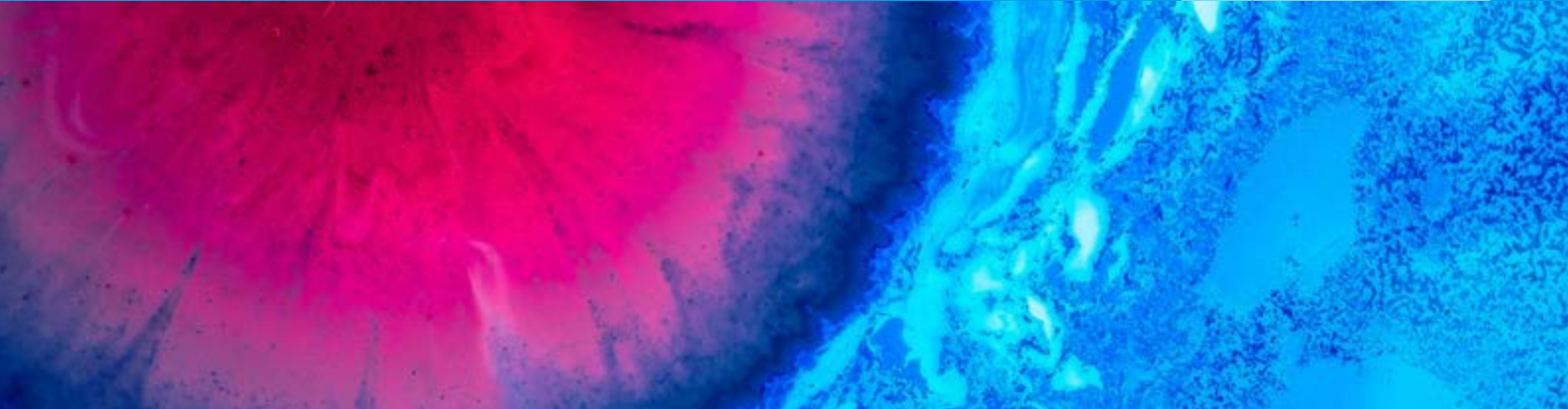
An apprenticeship or employment could include: Business Studies, Business Management, Law, Marketing and Advertising, Finance and Accounting Project or Event Management, Retail, Merchandising and Sales, Personnel Development, Administration and Human Resources.

Further education at the university to do any of the courses mentioned above and more.





Chemistry



Course Outline

If you enjoyed chemistry at GCSE, you'll love this A level course.

In the first year you will develop your GCSE understanding which will provide you with a clear foundational introduction to this higher-level study. You'll learn about physical, inorganic and organic chemistry as well as undertaking a series of practicals to develop your skills. The exam papers will include questions on the theory of practical work and interpretation of both quantitative and qualitative results.

As you move into your second year you will take the foundational topics and study them in further depth. Topics will include thermodynamics, rate equations, aromatic chemistry and protein synthesis.

Exam Board

AQA.

Skills Required

Chemistry is fundamentally an experimental subject where there are numerous opportunities to use practical experiences to link theory to reality. Therefore, problem solving, teamwork, communication and practical skill are highly valuable. Independent study and reasoning skills are also desirable.

Entry Requirement

Students wishing to study require one of the following:

- GCSE Science at grade 6/6 or above or
- GCSE Chemistry grade 6 or above

In addition to this students are required to have GCSE Maths at grade 5 or above.



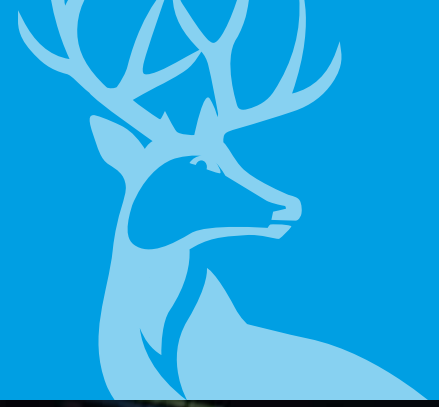
Future opportunities

Chemistry is a great choice of subject for people who want a career in health and clinical professions, such as medicine, nursing, biochemistry, dentistry or forensic science. It will also equip you for a career in industry, for example in the petrochemical or pharmaceutical industries.





Computer Science



Course Outline

- The characteristics of contemporary processors, input, output and storage devices
- Software and software development
- Programming
- Exchanging data
- Data types, data structures and algorithms
- Legal, moral, ethical and cultural issues
- Elements of computational thinking
- Problem solving and programming
- Algorithms to solve problems and standard algorithms
- The learner will choose a computing problem to work through according to the guidance in the specification.
- Analysis of the problem, Design of the solution, Developing the solution, Evaluation

Exam Board

OCR.

Skills Required

Successful student will have a passion for the subject and interest in all areas of computer science. They will enjoy solving problems, will be able to think analytically. The course requires a keen mathematical aptitude and ability to organize and to think both creatively and logically.

Entry Requirement

Learners who are beginning an A level course are likely to have followed a Key Stage 4 programme of study in Computer Science. GCSE Maths at Grade 5 or above.



Future opportunities

This course will enable learners to progress to higher study or to progress directly to employment. This qualification is suitable for learners intending to pursue any career in which an understanding of technology is needed. The qualification is also suitable for any further study as part of a course of general education. It will provide learners with a range of transferable skills which will facilitate personal growth and foster cross curriculum links in areas such as maths, science and design and technology.

Computer Science is a very creative subject and skills such as problem solving and analytical thinking will all be refined and explored as learners progress through the learning and assessment programme.



Criminology

Level 3 Certificate



Course Outline

Year 12: (Certificate) focuses on the changing awareness of crime and criminological theories, looking at how different crimes are portrayed in the media and attempts to explain criminal behaviour.

Year 13: (Diploma) focuses on the legal system in more depth, how crimes are punished and what happens inside a courtroom.

Assessment is by both controlled assessment and examination. There is one examination and piece of controlled assessment in each year. Each module is equally weighted at 25%.

Exam Board

Eduqas.

Skills Required

Students must have a keen interest in the legal, psychological and sociological aspects of crime and the legal system, although no prior knowledge is required. Good analytical skills are required, the ability to see a range of arguments, and the ability to conduct independent research and present material effectively.

Entry Requirement

Standard entry requirements including 5 GCSEs at Grade 5 or above, including English Language or Literature.



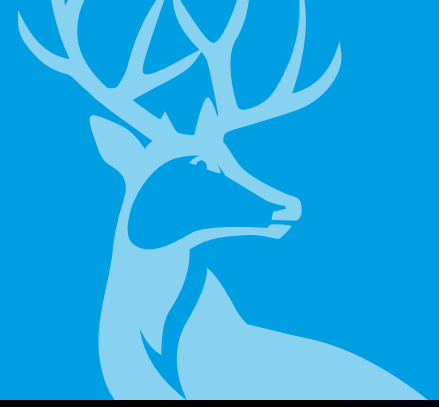
Future opportunities

This qualification could lead to reading Criminology, Psychology or Sociology at University, and provide a good background for entry to careers such as policing, social work, law and other aspects of the criminal justice system, such as forensic science





Drama and Theatre



Course Outline

The subject content details the knowledge, understanding and skills that students are expected to develop throughout the course of study.

The subject content for A-level Drama and Theatre is divided into three components:

1. Drama and Theatre
Written Exam 40% of A-Level
2. Creating Original Drama
Practical 30% of A-Level
3. Making Theatre
Practical 30% of A-Level

Exam Board

AQA.

Skills Required

Students must have good stage, screen or vocal presence. Students must have the ability to enter into another character and engage with an audience. A good understanding of dramatic techniques and creative insight are also required. Students should have the ability to memorise lines and having the confidence, energy and dedication to perform.

Entry Requirement

Standard entry requirements including GCSE grade 4 Maths plus grade 5 GCSE English Language and English Literature. Grade 5 in GCSE Drama is also desirable.



Future opportunities

Drama and Theatre Studies can lead to further study in Drama, Theatre Studies and Performing Arts in Higher Education at Degree or HND Level or Drama School. It can be used as part of your course to broaden your studies and may lead on to a career in the Performing Arts industries.





Economics



Course Outline

A Level Economics consists of 2 broad units which gives students a strong grounding in Microeconomic and Macroeconomic theory. In Micro learners study about the workings of the free market, market failure as well as the pros and cons of government intervention. In Macro, broadly speaking, students learn about how the economy works both at a national and global level.

Students will sit three examinations at the end of the course:

1. Microeconomics – 2 hour written paper, 80 marks
2. Macroeconomics – 2 hour written paper, 80 marks
3. Themes in Economics – 2 hour written paper, 80 marks

Exam Board

OCR.

Skills Required

A level Economics requires logical thinking, and a command of Maths to good GCSE level. It's also a subject which requires social awareness and which develops the ability to debate, both in class and on paper. There's often no right or wrong answer when it comes to Macroeconomics, so you need to be able to present arguments clearly, supported by relevant examples.

You can't rely entirely on your textbook. Economics is the life-blood of political debate, and you need to keep up to date, following news on line and in print to pick up on economic, political, business and social issues.

Entry Requirement

The minimum requirement to take A Level Economics is to have at least 5 GCSE 5 grades. 6 in Business or 6 in English and Maths.



Future opportunities

A Level economics provides an excellent foundation for students wishing to study Economics and Business related subjects at university. Students of Economics have a wide range of career choices available to them. These include working in both the public and private sectors. Economics students can be found in Banking, Financial Services, Government and a wide range of professional environments. They have a range of transferable and marketable skills, which are very attractive to a wide range of employers.





English Literature and Language



Course Outline

English A Level is about both verbal and written communication. It is a demanding and rewarding course. The examinations require a very thorough knowledge and understanding of the set texts and test your ability to evaluate, analyse and criticise as well as apply knowledge about written and spoken English language.

The English Language and Literature course aims to combine the skills of reading with creative use of writing and analysis of spoken and written English. Throughout the course, students will be encouraged to pursue their own interests in the English language, how it has changed over time and how it varies across the country. Students will be expected to engage in a wide range of literary and non-literary texts including studying a novel and an anthology.

Exam Board

AQA.

Skills Required

- A passion for English Language and writing.
- Be a keen reader and enjoy being challenged by more complex English Language and Literary concepts.
- Be a critical thinker who is willing to engage in analysis and debate about English Language and Literary texts.
- Be able to work well independently and with others.
- Be able to manage your time effectively.
- To have an aptitude to write fluently and accurately.

Entry Requirement

- GCSE English or English Literature at grade 6 or above.
- Four other GCSE passes at grade 5 (or equivalent) or above.



Future opportunities

A Level English and Literature has a high academic reputation in most areas of employment and with universities and colleges. The course is expected to produce people who are well read and are capable of expressing themselves fluently. These skills are useful in a wide range of degrees, from Law and Medicine, to careers in media and education.





English Literature



Course Outline

A Level English Literature offers a clear progression from GCSE and encourages independent study of a wide variety of texts within a shared context.

The A Level Literature course allows students to develop a wide range of skills, such as the ability to read critically, analyse, evaluate and undertake independent research. These are skills which are valuable for both further study and future employment.

The course offers an excitingly wide variety of texts in terms of genres and authors, enriching students' experience and appreciation of Literature.

The A-level non-exam assessment component provides opportunities for students to pursue their own areas of interest and develop personal and independent learning skills.

Exam Board

AQA.

Skills Required

- A passion for Literature.
- Be a keen reader and enjoy being challenged by more complex English concepts.
- Be a critical thinker who is willing to engage in analysis, literary theory and debate about Literature texts.
- Be able to work well independently and with others.
- Be able to manage your time effectively.
- To have an aptitude to write fluently and accurately.

Entry Requirement

- GCSE English Literature at grade 6 or above.
- Four other GCSEs at grade 5 (or equivalent) or above.



Future opportunities

A Level English Literature has a high academic reputation in most areas of employment and with universities and colleges. The course is expected to produce people who are well read and are capable of expressing themselves fluently. These skills are useful in a wide range of degrees, from Law and Medicine, to careers in media and education.





Film Studies



Course Outline

The Film Studies course will deepen your understanding, enjoyment and appreciation of film as a major art form of the twentieth century. You will study Cinema as a medium, as an art form and as a social and economic institution. Film Studies gives you the opportunity not only to debate and discuss film but also to learn practical skills. An interest in film over and above enjoying watching them is essential.

Film Studies explores the relationship between films and the individual, analysing the ways in which films create meanings and make us respond both intellectually and emotionally.

Students will learn about issues of production and consumption, including the supply of and demand for films, and will have the opportunity to debate some of the current issues in film, for example the global dominance of Hollywood and strategies for supporting indigenous/independent film.

The course balances critical and creative approaches to the study of film.

Exam Board

WJEC.

Skills Required

- Students need to be critical thinkers who are willing to engage in analysis and debate about films as well as the issues surrounding the film industry.

Students will need to be able to work well independently and with others and it is essential that you can manage your time effectively

- Students need to have the aptitude to write fluently and accurately.

Entry Requirement

- GCSE English at grade 5 or above
- Four other GCSEs (or equivalent) at 5 or above



Future opportunities

A Level Film is recognised as an entry qualification for a wide variety of degrees at University. The combination of critical and creative skills will be useful for any course or career. Previous students have gone on to work in film and television production.





French



Course Outline

The A-level specification builds on the knowledge, understanding and skills gained at GCSE. Students study technological and social change, looking at diversity and the benefits it brings. They will study highlights of French-speaking artistic culture, including francophone music and cinema, and learn about political engagement and who wields political power in the French-speaking world. Students also explore the influence of the past on present-day French-speaking communities.

Throughout their studies, they will learn the language in the context of French-speaking countries and the issues and influences which have shaped them. Students will study texts and film and have the opportunity to carry out independent research on an area of their choice. Assessment tasks will be varied and cover listening, speaking, reading and writing skills.

Exam Board

AQA.

Skills Required

Sound grammatical knowledge, excellent communication skills and confidence.

Entry Requirement

- GCSE French at grade 6 or above



Future opportunities

Apart from being beneficial at a personal level, your A level in French can provide opportunities in a variety of career paths. For those who want to specialise in language, you could work with different industries as a translator or work in education.

There will also be career opportunities in the travel and tourism industry. Being proficient in a language can give you broader career options, even if you were looking into a career in engineering, design technology or food technology.

Should you wish to take up another language, e.g. Japanese, at university, an A level in a modern foreign language is essential.

On a wider level, anyone who wants to travel for work or pleasure should consider taking this course.





Geography



Course Outline

A level Geography is contemporary, issues based approach to the subject. It is rooted in learning about the real world and will challenge students to think deeply about it and the role we have as citizens in managing the challenges our global future will bring. If you are interested in what is happening to the natural and human world around you and the complex relationship between the two then Geography is the subject for you!

You will need to be willing to take part in interesting discussions and consider options formulating opinions based on evidence and geographical theory. You will also have a chance to apply your learning in a fieldwork context during a week-long residential trip to Pembrokeshire, West Wales. You will be expected to stay informed of current geographical issues through research, use of media and extensive reading and then apply your understanding through a variety of means including data analysis, spoken word, essay writing and project work. Geographers are well rounded students who need to develop a broad set of skills which makes the subject diverse and interesting for those who enjoy variety in their learning.

Exam Board

Edexcel.

Skills Required

- Handling and interpreting qualitative and quantitative data.
- Use and understand a range of methodological approaches to primary and secondary fieldwork.
- Use and understand a range of statistical tests.
- Synthesise and evaluate contrasting arguments.
- Critical thinking and problem solving.
- Communication skills, literacy and oracy.
- ICT literacy.
- Numeracy skills and data handling.
- Cultural understanding and empathy

Entry Requirement

- GCSE English and Maths at Grade 5 or above.
- GCSE Geography at Grade 5 or above.
- Two other GCSE grades at 5 or above.



Future opportunities

Geography offers opportunities for many career paths and as a "facilitating subject" as defined by the leading Russell Group of universities is well regarded by institutions of higher education and employers. Careers for geographers split into the following broad groups: leisure & culture; travel; environment & sustainability; the business world; development & global issues; settlement & planning (e.g. housing manager, town planner); social occupations (e.g. teacher, HR, market research); physical systems (e.g. hydrologist) and occupations based on geographical techniques (e.g. cartography, developing GIS).





German



Course Outline

The A-level specification builds on the knowledge, understanding and skills gained at GCSE. Students study technological and social change, looking at the multicultural nature of German-speaking society. They will study highlights of German-speaking artistic culture, including art and architecture, and will learn how Germany's political landscape was formed. Students will explore the influence of the past on present-day German-speaking communities. Throughout their studies, they will learn the language in the context of German-speaking countries and the issues and influences which have shaped them. Students will study texts and film and will have the opportunity to carry out independent research on an area of their choice. Assessment tasks will be varied and cover listening, speaking, reading and writing skills.

Exam Board

AQA.

Skills Required

Sound grammatical knowledge, excellent communication skills and confidence.

Entry Requirement

- GCSE German at grade 6 or above.



Future opportunities

A language qualification is advantageous, and often essential for many careers. These include law, journalism, engineering, travel and tourism, business, commerce and interpreting and translating. Employers are impressed by a language qualification; it sets you apart from the average candidate! The international fields of science and technology look favourably upon candidates who demonstrate a linguistic ability in addition to their other skills. Business links are facilitated when linguistic barriers are overcome.





Health and Social Care

Level 3 Certificate



Course Outline

The Certificate has been designed to support progression to a range of job roles within the health and social care sector.

Completion of this qualification is achieved through classroom based learning and supported by placement in a real work environment. You will be required to undertake structured placement in a real work environment to support your learning and develop knowledge and skills relevant to the qualification. Work placements in health and care settings are essential to the course and provide valuable links between theory and practice. There is a minimum requirement of 75 placement hours.

You will also need to complete 9 mandatory units to achieve this qualification graded A*–D

One Extended Assessment covering the 'Core Mandatory' units (externally set, externally marked).

Exam Board

CACHE.

Skills Required

- A passion to help others
- Communication skills

Entry Requirement

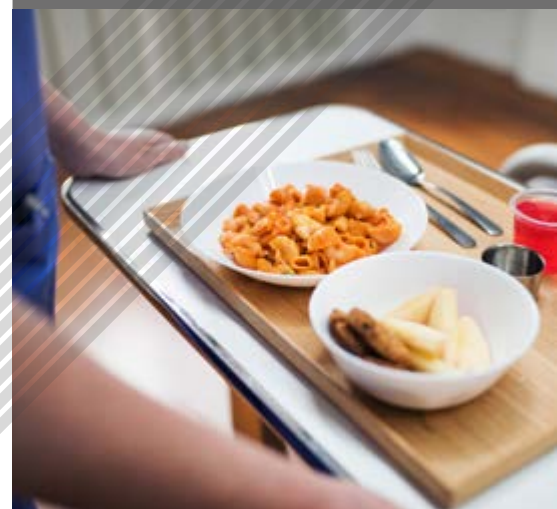
- Grade 5 or above in English, Maths and Science with a combination of 3 other good passes.
- OR Level 2 health and Social care.



Future opportunities

Upon achievement of this qualification learners will be able to progress onto access to Higher Education and progression into a wide range of job roles within the health and social care sector.

Possible careers include: nursing, midwifery, social work, social care work, care management, occupational therapy or other professions related to medicine.





History



Course Outline

History A level helps you understand the significance of historical events, the role of individuals in history and the nature of change over time. It will also help you to gain a deeper understanding of the past through political, social, economic and cultural perspectives.

Industrialisation and the People 1783–1885 will help you to understand how Britain developed economically, politically and socially in a period of history that saw great change, much of which is still very relevant in Britain today. For example how did democracy develop? How did Britain develop economy and become a great industrial nation? How did these changes affect different groups of people? How did political parties develop? How and why did people demand change?

By studying these topics you will not only have a greater understanding of Britain in the 19th century but you will also have a greater understanding of Britain today. The Cold War 1945–1991 looks at evolving international relations in an era of growing tension between communist and capitalist powers that sees the world on the verge of nuclear

Armageddon. You will explore concepts of communism and anti-communism, aggression and détente whilst reflecting of military powers today, what forces hasten conflict and promote peace in the modern world.

Exam Board

AQA.

Skills Required

Good communication and presentation skills will be a real asset. Good essay writing skills. Selection and deployment of relevant information. Analysis of sources and evaluative skills.

Entry Requirement

- GCSE English at grade 5 or above.
- Four other GCSE's at grade 5 (or equivalent) or above.



Future opportunities

Access to a broad range of academic courses and employment opportunities such as law, social work, civil service.





Information Technology

BTEC Level 3 Extended Certificate



Course Outline

BTECs embody a fundamentally learner-centred approach to the curriculum, with a flexible, unit-based structure and knowledge applied in project-based assessments. They focus on the holistic development of the practical, interpersonal and thinking skills required to be able to succeed in employment and higher education.

Exam Board

Pearson Edexcel.

Skills Required

Pearson BTEC Extended certificate in IT (Level 3) takes an in-depth look at the ICT that is all around us. ICT is at the heart of everyday life, at work, at home and in our leisure time. From Database management systems, Website development, Use of Social media in business and Information Technology systems, IT has an ever increasing role to play.

The course draws these together, with the essential skills required. The course is an ideal foundation for students entering the workplace as well as supporting students who are aiming for university places. The course attracts UCAS points. You will develop a theoretical background reinforced with practical skills that transfer into the modern workplace, providing useful experience if you have an interest in an IT-related career.

Entry Requirement

5 x Grade 5 @ GCSE. 5 or higher in KS4 computing/ICT is desirable.



Future opportunities

BTEC Nationals have been developed in consultation with industry and appropriate sector bodies to ensure that the qualification content and approach to assessment aligns closely to the needs of employers. Where they exist, and are appropriate, National Occupational Standards (NOS) and professional body standards have been used to establish unit content. In the IT sector, the following approaches have been used.

The Pearson BTEC Level 3 National Certificate, Extended Certificate and Foundation Diploma in Information Technology have been developed to reflect the underpinning knowledge of the Level 2 National Occupational Standards in IT Professional Standards (ITPS) 4.0, to include the range of competencies, knowledge and understanding elements that help learners meet the IT sector skills needs.



Mathematics



Course Outline

A Level Mathematics is a 2 year course which is examined entirely at the end of year 13. The course includes a variety of core maths topics such as:

- Calculus
- Coordinate Geometry
- Trigonometry
- Logarithms and Exponentials
- Polynomials
- Proof
- Numerical Methods

It also includes statistics and mechanics topics such as:

- Hypothesis Testing
- Probability
- Normal and Binomial Distributions
- Kinematics in 1 and 2 Dimensions
- Newton's Laws and Forces

The course is examined using three 2 hour papers.

Exam Board

Edexcel.

Skills Required

There is a lot of work involved in A Level maths, so students are expected to work at a fast pace, manage their time well and adhere to deadlines. The ability to work independently is essential as it is expected that students will complete one hour of study for every lesson (there will be 10 lessons a fortnight). A Level Maths students must show a lot of initiative as they are required to come along and ask questions when necessary. Students who do this course are highly motivated and possess good problem solving skills. They readily incorporate new information and take on board the advice of their teachers.

Entry Requirement

- Students are expected to have a grade 7 or above in GCSE maths.



Future opportunities

A Level Maths is a very well respected qualification. It is an essential requirement for most engineering, computer science, economics and biomedical sciences courses at university. It is essential to have A Level Maths if you want to study maths or physics at university.





Further Mathematics



Course Outline

A-level Further Mathematics is studied alongside A Level Mathematics. **All Further Mathematics students must also Study A level Mathematics.**

The Course covers four units: Core Pure Mathematics 1 and 2, Further Mathematics option 1 and 2. All of which are assessed at the end of year 13, each accounting for 25% of the final grade. This is a Linear course.

Unit 1&2 – Core Pure Mathematics 1&2: including Matrices, complex numbers, further calculus, further trigonometry, number theory, vectors.

Unit 3&4 – Further Mathematics Option 1&2: Students take two optional papers. With the options available being Pure Mathematics, Statistics, Mechanics and Decision Mathematics.

The course is assessed through four 1 hour 30 mins exams.

Exam Board

Edexcel.

Skills Required

The level of Mathematics covered on the course means that you must have a passion for maths. This course is well suited to people that like to think logically and seek a challenge. The ability to work independently is essential as it is expected that students will complete one hour of study for every lesson. A-Level Further Mathematics students must show exemplary initiative, as they are required to come along and ask questions when necessary. Students who do this course are highly motivated and possess good problem solving skills. They readily incorporate new information and take on board the advice of their teachers.

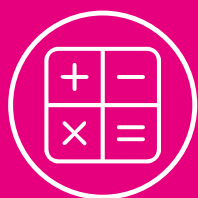
Entry Requirement

- Students are expected to have a grade 7 or above in GCSE maths.
- Students must also be studying A level Mathematics.

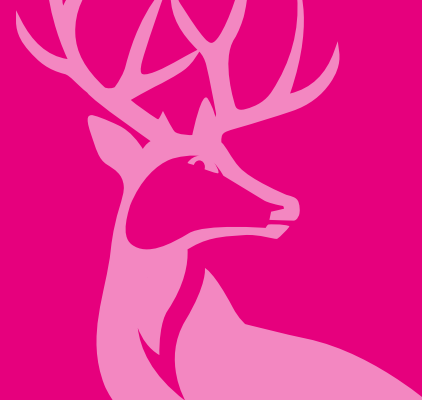


Future opportunities

A Level Further Mathematics is one of the most highly respected A Levels. It is highly desired by top universities and employers. Especially in fields with significant mathematics content such as Engineering and Physics.



Mathematics in Context (Core Maths)



Course Outline

The Mathematics in Context course is designed for you if you have achieved a 9 to 5 grade in GCSE Mathematics, but you've chosen not to continue your maths studies at AS or A level. This engaging and relevant qualification will improve your mathematical knowledge and show you how to apply it in real-world contexts.

It will prepare you for professional training or higher education courses, or equip you to apply for employment or higher apprenticeships in a wide range of industry sectors. With the aim to:

- consolidate and build on your mathematical understanding, and develop further mathematical understanding and skills in the application of mathematics to authentic problems
- build a broader base of mathematical understanding and skills in order to support the mathematical content in other Level 3 qualifications, for example GCE A Level Biology, Business Studies, Economics, Computing, Geography, Psychology, BTEC Applied Science, Business, Health and Social Care, IT
- prepare you for the range of varied contexts that you are likely to encounter in vocational and academic study, future employment and life.
- develop competence in the selection and use of mathematical methods and techniques

- develop confidence in representing and analysing authentic situations mathematically, and in applying mathematics to address related questions and issues
- build skills in mathematical thinking, reasoning and communication .

The course is assessed through two 1 hour 40 mins exams.

Topics covered

- Applications of statistics
- Probability
- Linear programming
- Sequences and growth

Skills Required

Students studying Mathematics in Context should have a sound mathematical basis with at least a grade 5 at GCSE Mathematics, with an interest in mathematical problem solving and it's application to a wide range of practical applications. Students will need the ability to study independently as with all Level 3 qualifications the expectation is that students complete at least one hour of independent study for every lesson. Students studying this course need to show the initiative to ask questions when necessary to further their understanding.

Exam Board

Edexcel.

Entry Requirement

- Students are expected to have a grade 5 or above in GCSE Maths.



What level is Core Maths?

Core Maths is the equivalent of an AS Level and is recognised in UCAS points as follows:

- A – 20
- B – 16
- C – 12
- D – 10
- E – 6

Future opportunities

Students who study some form of Mathematics after GCSE improve their career choices and increase their earning potential. Mathematics in Context is recognised by employers from a wide range of sectors. Many roles in today's workplace require high levels of budget management, statistical analysis and problem-solving skills; Core-Maths will be a useful tool in equipping you with these skills. The course has been developed with employers, universities and professional bodies as valuable preparation for higher education and employment.



Media Studies



Course Outline

Students will study varied and contemporary topics containing different and stimulating content which will help them to develop research skills, problem-solving skills, and utilise their creativity.

Students will also refine their debating skills through the discussion of contemporary issues from a range of perspectives.

A level Media will also give students the opportunity to improve their practical skills in their selected medium, offering them a chance to research independently and gain a deeper appreciation and understanding of the role media plays in today's world.

Exam Board

AQA.

Skills Required

- An interest in media and English, including current affairs, is essential.
- Be able to work independently and with others.
- Be able to manage your time effectively.
- Be able to write fluently and accurately – assignments are essay based.

Entry Requirement

- Students are expected to have a grade 7 or above in GCSE maths.



Future opportunities

Media A Level is recognised as an entry qualification for a wide variety of degrees at University. Media increasingly dominates our lives, and an understanding of how the media operates can only help your future career.

Media students have gone on to a wide range of careers within the industry including broadcast journalism, digital media production and marketing.





Performing Arts (Musical Theatre)

BTEC Level 3 Extended Certificate



Course Outline

Equivalent in size to one A Level. Five units, of which three are mandatory and one is external. Mandatory content (66%). External assessment (33%).

The three mandatory units focus on:

- research, critical analysis and extended writing skills that aim to support learners' progression to higher education. Learners will gain a good understanding of the work of influential practitioners to inform their own work and practice
- an introduction to the performing arts where learners will develop the appropriate skills and techniques in various performance disciplines such as acting, dance, musical theatre and physical theatre
- group performance, where learners will develop the essential psychomotor and affective skills essential for the performing arts.

They will develop physical techniques as well as wider transferable skills, such as being able to work collaboratively, personal management and organisation (rehearsals, time-management), being able to give and take direction, confidence in front of an audience, problem solving (refining the process) and teamwork).

Exam Board

Pearson Edexcel.

Skills Required

Students must have good stage, screen and vocal presence both as an actor and a singer. Students must have the ability to enter into another character and engage with an audience. A good understanding of dramatic techniques and creative insight are also required. A genuine understanding and interest in Musical Theatre are also necessary. Students should have the ability to memorise lines and having the confidence, energy and dedication to perform as well as the ability of combining the triple threat skills of Acting, Singing and Dancing.

Entry Requirement

Standard entry requirements including GCSE grade 4 Maths plus grade 5 GCSE English Language and English Literature. Grade 5 in GCSE Performing Arts, Drama or Music is also desirable. If you have not taken GCSE Performing Arts, Drama or Music, you will be asked to provide details of your interest in the subject outside of the school context and may be called for a short audition.



Future opportunities

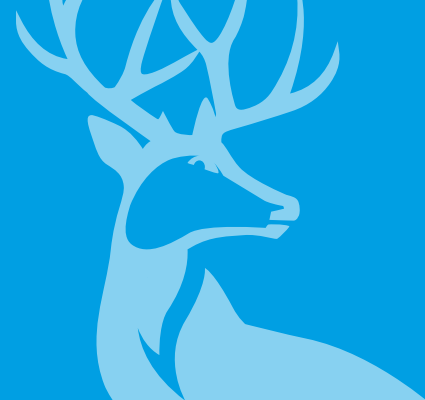
This qualification offers an engaging programme to support learners who want to pursue a career in musical theatre. This size of qualification allows learners to study related and complementary qualifications alongside it, without duplication of content. It can prepare learners for a range of Apprenticeships in performance-related areas.

When taken alongside further Level 3 qualifications, it supports access to a range of higher education courses in the performing arts sector, such as the BA (Hons) in Musical Theatre at ArtsEd or BA (Hons) in Musical Theatre.





Physics



Course Outline

Physics is for people who take a real interest in the world around them, those who have enquiring minds and want to understand why things are the way they are. It is important that you have a general interest in Science and that you are willing to learn new skills and techniques.

You'll learn about mechanics, particle physics, electric circuits, materials, waves, as well as undertaking a series of practicals to develop your skills.

The exam papers will include questions on the theory of practical work and mathematical interpretation of both quantitative and qualitative results.

As you move into your second year you will take the foundational topics and study them in further depth. Topics will include gravitational fields, nuclear radiation and space.

Exam Board

AQA.

Skills Required

Physics is an experimental subject where there are numerous opportunities to use practical experiences to link theory to reality. Therefore, problem solving, teamwork, communication and mathematical skills are highly valuable. Independent study and reasoning skills will also be necessary.

Entry Requirement

Students wishing to study require one of the following:

- GCSE Science at grade 6/6 or above
- Grade Physics at grade 6 or above

In addition to this students are required to have GCSE Maths at grade 5 or above (higher tier only).



Future opportunities

Physics lies at the very heart of technology and engineering. Universities highly regard Physics for entry to many degree courses and it is also useful if you decide to leave education after your 'A' levels.

Related job areas include: engineering, astronomy, computer programming, dentistry, electronics, medical physics, medicine, meteorology, physiotherapy, radiography, telecommunications and many more.





Politics



Course Outline

Politics at Prospect is a new and exciting course about issues that affect everyday lives. We aim to give students a critical understanding of British society. It is thought provoking and controversial.

Course Units include:

- UK Politics
- UK Government
- US Government and Politics

Exam Board

Edexcel.

Skills Required

Good communication skills, an analytical approach to the study of politics. A genuine interest in current affairs and a willingness to research and discuss political issues.

Entry Requirement

- GCSE English at grade 5 or above.
- Four other GCSE grades at 5 (or equivalent) or above.



Future opportunities

Politics is valuable for those students interested in higher education or considering a job in the professions such as law, media, public services and teaching.





Product Design



Course Outline

Product Design is a linear qualification which is examined at the end of year two. It requires students to engage in both practical and theoretical study. 50% of the course is graded on a design and manufacture where students will make a product to fit a Design Brief.

Indicative Content as follows:

- Materials and their applications
- Manufacturing Processes
- Modern Industrial and Commercial Practice
- Digital Design and Manufacture
- Design Development
- Health and Safety
- Responsible Design
- Design Styles and Movements
- Enterprise and Marketing

Exam Board

AQA.

Skills Required

Successful students will have a passion for the subject and will have studied Design Technology at KS4. They must be dedicated and motivated as this is a coursework heavy subject which requires a large percentage of the work to be done outside of timetable lessons. Students will need an excellent memory for the theories, processes and materials involved in Product Design and creative mind to create innovative and unique solutions. They will need to be confident in the workshop and be willing to practice different practical techniques.

Entry Requirement

- GCSE Maths grade 5 and above.
- GCSE English grade 5 and above.
- GCSE Design Technology (any discipline) grade 5 and above.



Future opportunities

Product Design is a very versatile subject that can lead on too many different paths. It is excellent for Further Education in creative subjects at University and College. Subjects such as architecture and engineering look for students with this qualification. It is also excellent preparation for Practical based apprenticeships.





Psychology



Course Outline

Psychology is a fascinating subject. The word psychology is derived from two Greek words: psyche (mind or spirit) and logos (discourse or study) which, when put together, produce "study of the mind".

A level Psychology will give you the opportunity to develop critical skills such as analysis, interpretation and evaluation as you explore how psychology has contributed to an understanding of individual, society and different cultures. This is the knowledge one needs to acquire not just for A level, but for the entire life.

During the course you will study the following units:

- Social Influence
- Memory
- Attachment
- Psychopathology
- Biopsychology
- Relationships
- Schizophrenia
- Forensic psychology
- Approaches in psychology
- Research methods

Exam Board

AQA.

Entry Requirement

- GCSE English and Maths at grade 5 or GCSE Science at grade 6 or above.
- Two other GCSE's at grade 5 or above.



Future opportunities

A qualification in psychology opens up opportunities in a diverse range of careers such as management, marketing, law and the media. It also offers the possibility of continued study in forensic or legal psychology counselling, industrial/occupational psychology, educational psychology and applied research.





Sociology



Course Outline

Sociology at Prospect is an interesting and exciting course about issues that affect everyday lives. We aim to give students a critical understanding of British society. It is thought provoking and controversial and so a general interest in discussing current moral and social issues is essential.

Students will study units on key social structures:

- Families and Households
- Education
- Mass Media
- Crime and Deviance

There is also a unit on sociological theories and research methodology.

Exam Board

AQA.

Skills Required

Good communication and presentation skills will be a real asset. Good essay writing skills. Understanding of research methods.

Entry Requirement

- GCSE English at grade 5 or above.
- Four other GCSE grade 5 (or equivalent) or above.



Future opportunities

Sociology is valuable for those students interested in Higher Education or considering a job in the professions such as law, media, public services and teaching. The subject is also very relevant to management training and the business world.





Sport and Exercise Science

BTEC Level 3 Extended Certificate



Course Outline

The BTEC National Extended Certificate in Sport is an Applied General qualification for post-16 learners who want to continue their education through applied learning and who aim to progress to higher education and ultimately to employment in the sport sector. The qualification is equivalent in size to one A Level, and it has been designed as a one-year, full-time study programme, or a full two-year programme when studied alongside a further Level 3 qualification. Learners will study three mandatory units:

- Unit 1: Anatomy and Physiology
- Unit 2: Fitness Training and Programming for Health, Sport and Well-being
- Unit 3: Professional Development in the Sports Industry.

Learners will also study one optional unit from a range which has been designed to support choices in progression to sport courses in higher education, and to link with relevant occupational areas.

Exam Board

Pearson Edexcel.

Skills Required

- cognitive and problem-solving skills: use critical thinking, approach non-routine problems applying expert and creative solutions, use systems and technology
- intrapersonal skills: communicating, working collaboratively, negotiating and influencing, self-presentation
- interpersonal skills: self-management, adaptability and resilience, self-monitoring and development.

Entry Requirement

- GCSE English and Science at grade 5 or above.
- GCSE PE/BTEC Sport preferable at Grade 5/L2 Pass or above.



Future opportunities

BTEC Sport is valued by employers and Higher Education (universities and colleges). If you want to get a job straight away, you could work in a Sports Centre; or an Outdoor Activities Centre. If you decide to go to university or college and you have other qualifications, you could take a degree in subjects such as: Sports Science, Sports Development, Teacher Training, Physiotherapy, Sports Psychology.



Sport and Exercise Science

BTEC Level 3 Diploma



Course Outline

The Pearson BTEC Level 3 National Diploma in Sport is intended to be an Applied General qualification for post-16 learners wanting to continue their education through applied learning, and who aim to progress to higher education and ultimately to employment, possibly in the sports sector.

The qualification is equivalent in size to two A Levels and has been designed as a two-year programme when studied alongside further Level 3 qualifications.

Learners will study six mandatory units:

- Unit 1: Anatomy and Physiology
- Unit 2: Fitness Training and Programming for Health, Sport and Well-being
- Unit 3: Professional Development in the Sports Industry
- Unit 4: Sports Leadership
- Unit 4: Investigating Business in the Sport and Active Leisure Industry
- Unit 5: Skill Acquisition in Sport.

Learners will also study three selected units from a range of optional units that have been designed to support progression to a variety of sport courses in higher education and to link with relevant occupational areas.

Exam Board

Pearson Edexcel.

Skills Required

- cognitive and problem-solving skills: use critical thinking, approach non-routine problems applying expert and creative solutions, use systems and technology
- intrapersonal skills: communicating, working collaboratively, negotiating and influencing, self-presentation
- interpersonal skills: self-management, adaptability and resilience, self-monitoring and development.

Entry Requirement

- GCSE English and Science at grade 5 or above.
- GCSE PE/BTEC Sport preferable at 5/L2 Pass or above.



Future opportunities

BTEC Sport is valued by employers and Higher Education (universities and colleges). If you want to get a job straight away, you could work in a Sports Centre; or an Outdoor Activities Centre. If you decide to go to university or college and you have other qualifications, you could take a degree in subjects such as: Sports Science, Sports Development, Teacher Training, Physiotherapy, Sports Psychology.



First Award in Sport

BTEC Level 1/Level 2



Course Outline

This course provides an engaging and relevant introduction to the world of sport. It incorporates important aspects of the industry, such as fitness testing and training for sport and exercise, the psychology of sport, practical sports performance and sports leadership. It enables you to develop and apply your knowledge, while also developing a range of relevant practical, communication and technical skills. Students will study three mandatory units, covering the underpinning knowledge and skills required for the sports sector:

- fitness for sport and exercise
- practical performance in sport
- applying the principles of personal training.

Students will build on the knowledge gained in the mandatory units by studying one further unit, covering areas such as:

- the mind and sports performance
- the sports performer in action
- leading sports activities.

Exam Board

Pearson Edexcel.

Skills Required

- research and independent learning skills
- communication and teamwork skills
- self-management, adaptability and resilience, self-monitoring and development.

Entry Requirement

- Level 3 or higher in English and Maths.



Future opportunities

- Other Level 2 vocational qualifications
- Level 3 vocational qualifications
- Related academic qualifications



Travel and Tourism

BTEC First Level 2



Course Outline

This qualification provides an engaging and stimulating introduction to the world of travel and tourism giving you the opportunity to develop knowledge and technical skills in a practical learning environment.

You will explore some of the key areas within the sector, including accommodation, tourism development and promotion, transport and visitor attractions. You will investigate the importance of the travel and tourism sector to the UK, and investigate different types of customer and UK destinations. You will also have the opportunity to study international travel and tourism. You will develop key skills, such as research, report drafting and writing skills and project management.

Students cover the following three mandatory units, covering the underpinning knowledge and practical skills required to work in the industry:

- UK travel and tourism sector
- UK travel and tourism destinations
- the travel and tourism customer experience.

They then choose one further unit from two optional units, covering more specific aspects of the global travel and tourism sector.

These are:

- international travel and tourism destinations
- factors affecting worldwide travel and tourism.

Exam Board

Edexcel.

Skills Required

BTEC Travel and Tourism is a vocationally related qualification, where learners develop knowledge and understanding by applying their learning and skills in a work-related context.

Entry Requirement

Level 3 or higher in English and Maths.



Future opportunities

The qualification is effective because they enable learners to take responsibility for their own learning and to develop skills that are essential for the modern-day workplace.

Skills include: team-working from a prescribed brief, working to deadlines, presenting information effectively, accurately completing administrative tasks and processes. When taken as part of a balanced curriculum, there is a clear progression route to a Level 3 course or Apprenticeship.

A BTEC qualification in Travel and Tourism will open doors to progression to further study and responsibility in the workplace.

