



Farewell to our Year 11s

This week, we have welcomed our new Year 6 parents and students to Prospect, and also said goodbye to our Year 11 students.



Mr D Littlemore
Headteacher

Quote of the week

The only failure is not to try.

George Clooney
(Actor)

On Wednesday evening, we were delighted to meet so many of the new students - and their parents - who will be joining us in September. Whilst parents had the opportunity to find out more about the transition process, our high expectations and our plans for next year, Ms Ralston and Ms Vacy-Ash entertained the students with 'getting to know you activities' to start them on their Prospect journey. This can be a daunting time, so I hope that the first of our transition events has helped them to feel more prepared for joining us.

On Friday, we said goodbye to our Year 11s at school with a wonderful farewell assembly of embarrassing year 7 photos, shirt signing, happy memories and just a

few tears! They have been a fabulous year group, with their hard work and resilience really evident throughout the exam period. I'm looking forward to seeing them in all their finery at the Prom next week, which will be a fitting end to the last five years.

We are already planning some exciting changes for the next academic year. To support our curriculum delivery, several departments will be moving to new locations in the school. As I'm sure you can imagine, there is an enormous amount of packing, moving and clearing out necessary! In order to ensure that we are fully ready for the start of the new term, some of the contractors will need to

start work as soon as possible, so I have made the decision to close for the summer term two days early. We will be finishing on Wednesday 17 July. I trust you will understand the need for us to do this, and I'm sure your children will appreciate the earlier start to their summer holiday.

However, there is still over a month to go until then and we have plenty more learning to pack in, with parent consultation evenings for all remaining year groups before the end of term. I am looking forward to meeting as many parents as possible at these events during the coming weeks.

Mr D Littlemore
Headteacher

New School Day

Prayer room

We would like to remind students that we have a multi-faith prayer room in school (near reception).

It is open at both breaktimes, and is available to students of any faith (or no faith) who would like a few moments of quiet contemplation, meditation or prayer.

Multi-Faith Prayer Room



We have introduced these two changes to the school day to support the continued delivery of high-quality teaching and learning for all our students:

Tutor time has increased to 30 minutes a day. This is to support the role of the tutor in ensuring that every student has a key member of staff with whom they will have daily contact. Through tutor time, there will be a comprehensive programme including PSHE, regular assemblies, peer mentoring, academic and pastoral support, Drop Everything And Read (DEAR) and other enrichment opportunities. We have decided to return tutor time to the beginning of the day to ensure that all students are properly prepared for the start of the day. Tutor time is a key part of the day and, as such, all students are expected to be ready and in their form rooms by 8.30 each morning.

We have also built in 5 minutes between each lesson. We recognise that we are a large site and students are losing learning time as they move around the school. This will enable every lesson to provide a full hour of teaching and learning time; it will also remove any excuses for lateness to lessons.

From September 2019, the school day will be as follows:

8.25	Arrive to school
8.30 – 9.00	Tutor period
9.05 – 10.05	Lesson One
10.10 – 11.10	Lesson Two
11.10 – 11.40	Break
11.40 – 12.40	Lesson Three
12.45 – 1.45	Lesson Four
1.45 – 2.15	Break
2.15 – 3.15	Lesson Five

Mr D Littlemore
Headteacher

Theme of the week

17 - 21 June

Refugee Week



Boosting Aspirations Workshop.

Tuesday 25 June 2019 & Wednesday 3 July 2019 (see poster on next page)

An event for Parents and Carers An important event for all our SEND students - it is never too early to think about next steps.

Trips – all letters are available on the website under parents' letters.

25 June 2019 – Peter Brett final visit for all the mentors. Non-uniform is fine. Please return your feedback forms ASAP. Do not forget to add all the transferable skills to your CV. You have all worked so hard.

9 July 2019 - Reading scholars visit – no charge and lunch is provided. Non-uniform is fine.

Upcoming events:

Interested in law? A local firm will provide students with an employer engagement day. Come and see me for more info Year 10+

Work experience placements – hopefully all your paperwork has been returned now. Date : 8-12 July 2019.

Gillette in Reading are looking for a school leaver apprentice to train in electrical mechanical engineering - see website for details. English and maths Grade 4.

Siobhan Gallivan
Head of Careers - Room D4
sgallivan@prospect.reading.sch.uk



English & Science progress tests

Over the next couple of weeks, Year 7 and Year 8 will be sitting their end of year tests in English and Science.

Year 7 and 8 tutors - can you ask them to bring headphones in everyday for the next two weeks (starting Monday 17 June).

Their teachers will give them more information or they can come and find me.

Ms K Ray
Second in department - English

**EMPLOYMENT IS
EVERYONE'S BUSINESS**

base
british association for
supported employment

Boosting Aspirations for Young People with SEND

Tuesday 25th June 2019

11:00 am – 13:00 pm

Venue: Newbury College, Monks Lane, Newbury, RG14 7TD

Repeated on

Wednesday 3rd July 2019

18.45pm- 20.45pm

Venue: Bracknell Open Learning Centre, Rectory Lane, Bracknell,

RG12 7GR

This seminar is supported by BASE/Elevate which aims to raise employment aspirations across Berkshire through the European Social funded project, Employment is Everyone's Business. The project seeks to identify and promote best practice in the transition from education to employment



Who should attend?

This event is aimed at Parents and Carers of young people with Special Educational needs and disabilities who live in Berkshire.

To confirm a place please email:

Laura.davis@base-uk.org or telephone: 07879492630



WHAT'S GOING ON?

QUIZ NIGHT

Prospect Community Association

Lots of great prizes on 28 June 2019

Everyone is invited to the new Prospect Community Association's (PCA) first ever event - a fun quiz night with refreshments, raffle, games and more.

Now taking place on **28 June 2019, 6:30 - 8:45pm**, the evening kicks off with a quick introduction to the PCA, a run-down of our fundraising and community support aims, and a chance for you to share your ideas on other special events that we can hold over the next few months.

Teams of up to 6 players (8 if including children) will compete in our entertaining, 6-round quiz. There's something for everyone with picture, music and general knowledge questions.

You can come as a team, or join up with others on the night, and there is a prize for the winners.

A raffle with prizes, including brand new electrical and beauty goods, will run alongside a 'fast raffle' with a table full of novelties.

And we're also planning on providing refreshments to ensure that everyone's energy levels are kept high!

We're asking for donations on the door to take part - £3 per adult; £2 per student; and £15 for a ready-made team of six (or 8 if including children). Register your place here now and pay on the night please.

If you think you can help in any way - by providing refreshments, donating raffle prizes, or by giving your time or expertise - please contact us at pca@prospect.reading.sch.uk

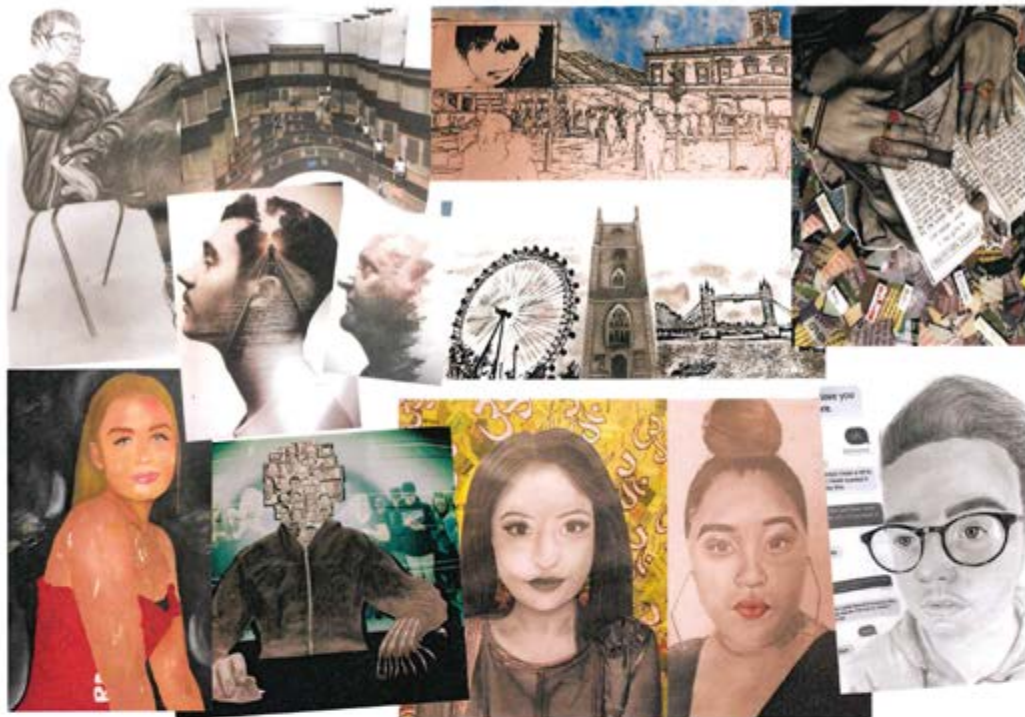
Help us by making this the first of many great fundraising events at Prospect School to support our students and our community.

Eventbrite link:

<http://bit.ly/2ldAjlw>

Anna Fowler
Prospect Community Association

'A' Level Exhibition 2019



Tuesday, 25 June 2019 - 3 to 4:30pm
Lower School Hall

DINTON PASTURES
SATURDAY 20th & SUNDAY 21st JULY

MARVELLOUS
2019

the family music festival

www.marvellousfestivals.com

 WOKINGHAM
BOROUGH COUNCIL



SIXTH FORM INDUCTION (DAY ONE)

Wednesday 19th June

9.30am-1.15pm

We are holding our first Induction Day for Year 11 into 12 students on 19th June. This will be an informal welcome to the Sixth Form - students can find out information and staff will be available to answer any queries or worries students may have. The day will start at 9.30am and finish at 1.15pm.

Please RSVP by Wednesday 12th June, to either Miss Holt aholt@prospect.reading.sch.uk or Mrs Jeffery jjeffery@prospect.reading.sch.uk or call us on 0118 9023191.

Key Dates

Exam Results Day

22nd August

8.00am-10.00am

~ ~ ~

**Sixth Form
Interviews held on
22nd August**

~ ~ ~

**Back-up Sixth Form
Interview Date**

30th August 2019

~ ~ ~

**Induction Day One
Wednesday 19th June**

~ ~ ~

**Induction Day Two
(start of term)**

**Wednesday 4th
September**

**PROSPECT SCHOOL
Sixth Form
L Block
www.prospect.reading.sch.uk**

What's occurring?



SCHOOL CALENDAR

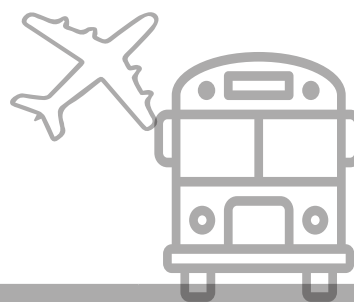
Date	Event	Details
2018 - 2019	Term Six	Monday 3 June - Friday 19 July
Tues 25.06.19	'A' Level Art Exhibition	Lower School Hall - 3:30pm to 4:30pm
Thur 27.06.19	Year 8 Parent Consultation Evening	Lower School Hall - 3:30pm to 7:30pm
Thur 27.06.19	Year 9 Parent Consultation Evening	Lower School Hall - 3:30pm to 7:30pm
July	Celebration of Achievement Afternoons	Details to follow shortly.
Tues 02.07.19	Year 10 Parent Consultation Evening	Lower School Hall - 3:30pm to 7:30pm
Tues 02.07.19	Year 12 Parent Consultation Evening	Lower School Hall - 3:30pm to 7:30pm
Wed 03.07.19	Year 6 Transfer Day 1	8:45am to 2:45pm
Thur 04.07.19	Year 6 Transfer Day 2	8:45am to 2:45pm
Thur 04.07.19	Summer Concert	6:30pm to 8:30pm
Tues 09.07.19	Festival of Sport Day	All day
Thur 11.07.19	Year 7 Parent Consultation Evening	Lower School Hall - 3:30pm to 7:00pm
Fri - 12.07.19	Curriculum Day 4 - PSHE & Wellbeing Day	All day



REPORT DATES

Year Groups	Scheduled between
7,8,9,10,12	Monday 1 July - Friday 5 July 2019

SCHOOL TRIPS



Date	Event	Year Groups
Every Wed until July end of term	Rushall Farm, Bradfield, READING	Selected Year 7
Monday 17 June	Rushall Farm	10
Monday 17 June	Health Care, University of Reading	9 & 10
Thursday 20 June	The Calcot Hotel - Prom	11
Friday 21 June	Town Championships	Selected
Sunday to Thursday, 23 to 27 June	Pembrokeshire	12
Tuesday 25 June	Peter Brett	10
Friday 28 June	Stratford upon Avon	7 & 8
Monday 1 July	Rushall Farm	10
Tuesday 2 July	Rushall Farm	9
Tuesday 9 July	Reading University Scholars	9
Monday 15 July	Brilliant Club, Royal Holloway Graduation	7 & 8
Monday & Tuesday, 15 & 16 July	Rushall Farm	9 & 10 (& Bridge tbc)

Puzzle of the week



Place the numbers 1-6 in the circles below such that:

- The sum of the numbers 5 and 6 and the numbers between them is 15
- The sum of the numbers 1 and 2 and all the numbers between them is 12
- The sum of the numbers 4 and 5 and all the numbers between them is 21



(Answer in next newsletter)

Last issue's answer:

58.3 mph to 2dp (it isn't 60 as a different length of time was spent at each speed!)

EXTRA CURRICULAR ACTIVITIES

We offer a wide range of extra curricular activities to help you learn more and to develop your skills.

Why not come along?

Subject	Year Groups	Day	Time	Location
Art				
Coursework Catch Up	9-11	Monday	3.00pm-4.00pm	Art Block
Coursework Catch Up	9-11	Wednesday	3.00pm-4.00pm	Art Block
Coursework Catch Up	9-11	Thursday	3.00pm-4.00pm	Art Block
Computing				
Hi-Flyers Workshop	10-13	Tuesday	2.45pm-3.45pm	C23
Computer Science Clinic	10-13	Wednesday	1.15pm-1.45pm	C24
Cyber Stars	7-9	Thursday	1.15pm-1.45pm	C21
Drama/Music				
KS3 Drama Workshop	7-8	Tuesday	1.15pm-1.45pm	A02
KS4 Music Theory Workshop	9-11	Wednesday	2.45pm-3.45pm	A10
KS3 Choir	7-8	Thursday	1.15pm-1.45pm	A10
KS4 Music Composition Workshop	9-11	Thursday	2.45pm-3.45pm	A10
Drum Ensemble		Friday	1.15pm-1.45pm	Music Studio
KS4 Drama Workshop	9-11	Friday	1.15pm-1.45pm	A02/LSH
General				
After School Homework Club	All	Every day	2.45pm-3.45pm	Library
Music Group (with the School Counsellor)	All	Wednesday	3.30pm-5.00pm	Music Dept
German				
GCSE Revision – Listening/Reading Skills	11	Wednesday	10.45am-11.15am	L11 (Mrs McCavish)
Health & Social Care				
Health & Social Care Intervention	11	Thursday	10.45am-11.15am	H&SC Dept
Health & Social Care Intervention	11	Friday	2.45pm-3.45pm	H&SC Dept

EXTRA CURRICULAR ACTIVITIES

Subject	Year Groups	Day	Time	Location
---------	-------------	-----	------	----------

History

Year 11 Revision Group	11	Wednesday	2.45pm-3.45pm	D26
Year 11 Revision Group	11	Thursday	2.45pm-3.45pm	D17
Year 11 Revision Group	11	Thursday	2.45pm-3.45pm	A34

Mathematics

Mathematics Help Club	7-10	Wednesday	3.00pm-4.00pm	D21
Mathematics Help Club	11	Wednesday	3.00pm-4.00pm	D33

P.E.

Basketball	10 & 11	Monday	10.45am-11.15am	Sports Hall
Basketball	7, 8 & 9	Monday	10.45am-11.15am	Gym
Netball	All Years	Monday	1.15pm-1.45pm	Sports Hall
Basketball	10 & 11	Monday	1.15pm-1.45pm	Gym
Table Tennis	All Years	Monday	1.15pm-1.45pm	Lower School Hall
Boys Fitness	All Years	Monday	1.15pm-1.45pm	Fitness Factory
Basketball	10 & 11	Tuesday	10.45am-11.15am	Sports Hall
Gymnastics	KS3	Tuesday	10.45am-11.15am	Gym
Girls Fitness	All Years	Tuesday	10.45am-11.15am	Fitness Factory
Badminton	KS3	Tuesday	1.15pm-1.45pm	Sports Hall
Basketball	10 & 11	Tuesday	1.15pm-1.45pm	Gym
Table Tennis	All Years	Tuesday	1.15pm-1.45pm	Lower School Hall
Boys Fitness	All Years	Tuesday	1.15pm-1.45pm	Fitness Factory
Girls Netball Club	All Years	Tuesday	After School	
Football Fixtures	7	Tuesday	After School	
Football Fixtures	10	Tuesday	After School	
Basketball	10 & 11	Wednesday	10.45am-11.15am	Sports Hall
Basketball	7, 8 & 9	Wednesday	10.45am-11.15am	Gym
Boys Fitness	All Years	Wednesday	10.45am-11.15am	Fitness Factory
Indoor Football	All Years	Wednesday	1.15pm-1.45pm	Sports Hall

EXTRA CURRICULAR ACTIVITIES

Subject	Year Groups	Day	Time	Location
P.E.				
Basketball	10 & 11	Wednesday	1.15pm-1.45pm	Gym
Table Tennis	All Years	Wednesday	1.15pm-1.45pm	Lower School Hall
Girls Just Dance/Fitness	All Years	Wednesday	1.15pm-1.45pm	Fitness Factory
Football Club	All Years	Wednesday	After School	
Football Fixtures	9	Wednesday	After School	
Netball Fixtures	7 & 8	Wednesday	After School	
Basketball	10 & 11	Thursday	10.45am-11.15am	Sports Hall
Girls Basketball	All Years	Thursday	10.45am-11.15am	Gym
Basketball	10 & 11	Thursday	1.15pm-1.45pm	Sports Hall
Multi-sports	All Years	Thursday	1.15pm-1.45pm	Gym
Boys Fitness	All Years	Thursday	1.15pm-1.45pm	Fitness Factory
Football Fixtures	8	Thursday	After School	
Football Fixtures	11	Thursday	After School	
Netball Fixtures	9	Thursday	After School	
Basketball	10 & 11	Friday	10.45am-11.15am	Sports Hall
Basketball	7, 8 & 9	Friday	10.45am-11.15am	Gym
Girls Fitness	All Years	Friday	10.45am-11.15am	Fitness Factory
Badminton	KS4	Friday	1.15pm-1.45pm	Sports Hall
Basketball	10 & 11	Friday	1.15pm-1.45pm	Gym
Badminton	GCSE	Friday	After School	
Science				
KS3 Homework Club	7-8	Tuesday	2.45pm-3.45pm	B01, B02, B13
Year 10 High Ability Club	10	Tuesday	3.00pm-4.00pm	
Year 9 High Ability Club	9	Tuesday	3.00pm-4.00pm	B14
Technology				
Design and Make It Club	7 - 8	Wednesday	2.45pm-3.45pm	L05

Be equipped for Maths.

Everything you need for GCSE Maths and beyond!

Only

£25



Includes

- Casio Classwizz fx-991ex Calculator
- Clear Pencil Case
- Geometry Kit:
 - ✓ Ruler
 - ✓ Compass
 - ✓ Protractor
 - ✓ Pencil + Sharpener + Rubber

RRP £35

Suitable for all years
Available at parents evenings and from the Maths department

Highly recommended for GCSE, Essential for A Level Maths

CASIO

CLASSWIZZ
Non-programmable Scientific Calculator



$x \pm$ $\frac{\square}{\square}$ $\frac{\square}{\square}$	1: Calculate Normal calculation.	$\frac{\square}{\square}$ $\frac{\square}{\square}$	2: Complex Make calculations with complex numbers, including conversion between Cartesian and mod-arg form.	$\frac{\square}{\square}$ $\frac{\square}{\square}$	3: Base-N Convert a number to a different base (e.g. decimal to binary) and make calculations (e.g. +, x) in different bases.
$\begin{bmatrix} \square & \square \\ \square & \square \end{bmatrix}$	4: Matrix Multiply matrices, raise to a power, transpose or find the inverse or determinant.	\vec{a}	5: Vector Find the dot or cross product of two vectors, or find the angle between two vectors.	$\frac{\square}{\square}$	6: Statistics Make calculations from a variable or frequency table, including mean, standard deviation, PMCC and regression lines.
$\frac{\square}{\square}$	7: Distribution Get values from Binomial, Poisson and Normal tables, including inverse-Z tables.	$\frac{\square}{\square}$	8: Spreadsheet Use Excel, allows you to input data and make calculations (e.g. Mean) based on cell ranges.	$\frac{\square}{\square}$	9: Table Get a table of values for a given function, e.g. the values of y in $y = x^2 - 2x$ as x varies between -4 and 4.
$\frac{XY}{\square}$ $\frac{\square}{\square}$	A: Equation/Func Solve linear simultaneous equations and polynomial equations (i.e. quadratics, cubics, quartics).	$\frac{XY}{\square}$ $\frac{\square}{\square}$	B: Inequality Solve quadratic inequalities (as well as cubic and quartic inequalities).	$\frac{\square}{\square}$	C: Ratio Find a missing value in two equivalent ratios.

MATHEMATICS HELP CLUB



π
KEEP
CALM
AND JOIN
MATH
CLUB

When: 3pm – 4pm

Wednesday

Where: D21 (Yr 7-10)

D33 (Yr 11 H&F)

Who: All years and levels

